

# HAGIA SOPHIA

A DISCOVERY DOCUMENTARY  
BY **GÖKSEL GÜLENSOY**

Where history, architecture,  
mystery and faith converge  
beneath the ancient stone.

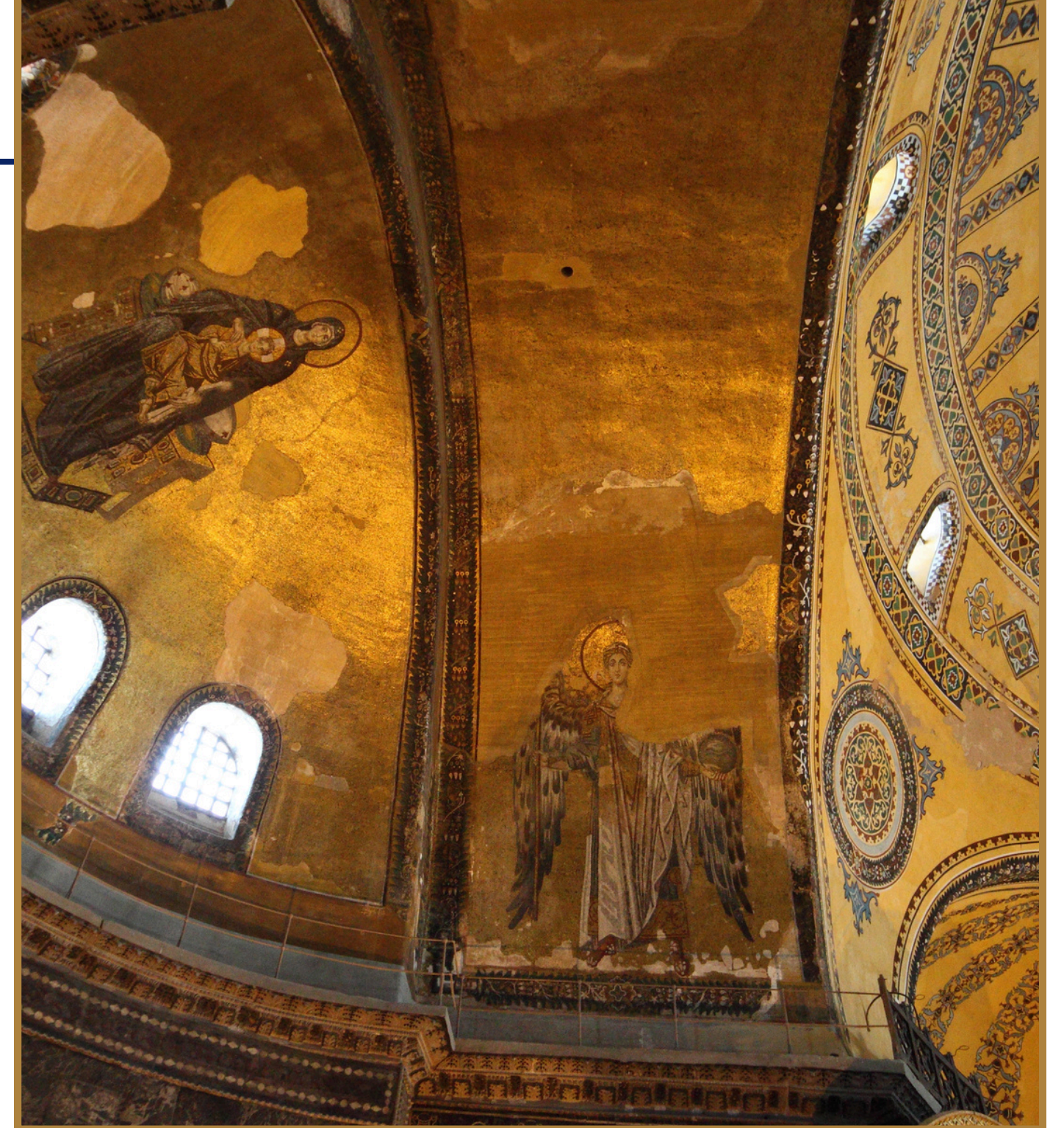


# The Depths of Constantinople

Secrets of Power  
Beneath a Holy Monument

# LOGLINE

Beneath one of the world's most iconic monuments lies a rediscovered world of tunnels, vaults, water systems and a 4th-century hypogeum—revealing how ancient engineering, power and faith shaped the spiritual heart of Istanbul.



# SYNOPSIS

***Hagia Sophia – The Hidden World Below*** reveals the secret universe beneath one of the world's most iconic monuments. For centuries sealed off and wrapped in myth, this underground realm consists of tunnels, vaults, carved chambers and long-hidden service systems that formed the unseen backbone of the Hagia Sophia.

Recent excavations have uncovered a three-chamber hypogeum from the 4th century—older than the monument itself—opening the way into a multilayered labyrinth that reflects both Byzantine engineering and later Ottoman adaptations. Through live-action cinematography and archaeological visualizations, the film maps the networks of air shafts, water channels and service corridors that sustained a sacred structure at the crossroads of empires.

Archaeologists, engineers and historians guide the audience through new discoveries, technological investigations and long-standing legends—from rumored escape routes to sealed spaces beneath the complex. As restoration progresses and selected areas slowly open to the public, the film explores the delicate balance between preservation, access and spirituality.

*Hagia Sophia – The Hidden World Below* offers a rare and visually immersive journey into a world never meant to be seen—until now.

# OUR TEAM

**Beneath the Hagia Sophia** brings together an extraordinary group of internationally acclaimed artists and filmmakers whose combined experience elevates this discovery documentary to a truly cinematic level.



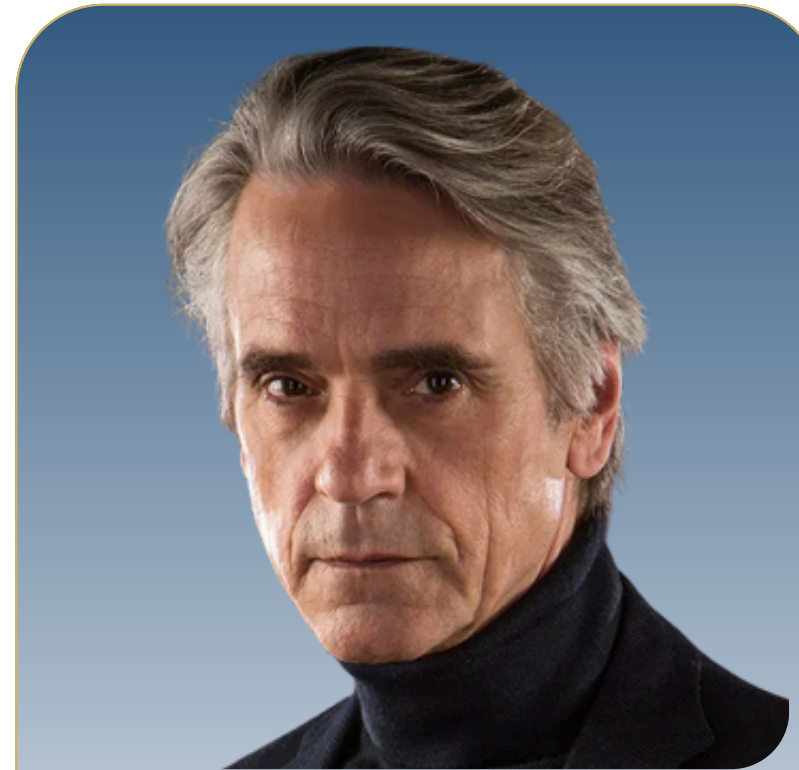
**Göksel Gülensoy** DIRECTOR

A pioneer with decades of specialized research and unique access to the subterranean world of Hagia Sophia. His work forms the foundation of this cinematic exploration.



**John Malkovich** PRESENTOR

One of the most distinguished actors of our time, he leads the project on-screen, guiding viewers through the mysteries hidden beneath one of the world's most iconic monuments.



**Jeremy Irons** NARRATOR

Renowned for his captivating voice and masterful storytelling, he enriches the film with emotional depth and intellectual clarity.



**George Kallis** MUSIC

An award-winning composer known for rich, atmospheric scores who creates the documentary's immersive musical landscape.

# GÖKSEL GÜLENSOY GLOBALLY RECOGNIZED EXPERT

“*Director Göksel Gülensoy* is not only the leading authority on the underground world of Hagia Sophia — he is also referenced in Dan Brown’s bestselling novel “*Inferno*” (page 84), cited as one of the very few individuals with deep knowledge of the monument’s hidden structures. His decades of research and unprecedented access have shaped global understanding of this sacred site.”



# WHY ACROSS CONTINENTS



## Different perspectives

The story of Hagia Sophia belongs to the world — shaped by centuries of cultural exchange, migration and shared heritage. By filming across continents, we bring together diverse viewpoints from historians, engineers, spiritual leaders and conservation experts. This global lens reveals how one monument continues to influence societies far beyond Istanbul.



## Global reach

With contributors, experts and audiences spanning multiple continents, the project is naturally positioned for international distribution. The underground world of Hagia Sophia has never been shown with this level of cinematic depth and global context. This worldwide perspective ensures strong relevance for streamers, broadcasters and cultural institutions around the globe.



## Heartfelt stories

From Europe to Asia and beyond, people feel a deep emotional connection to the Hagia Sophia. These personal narratives — memories, beliefs, academic passions and artistic inspirations — enrich the documentary with authentic human voices. They show that the impact of this sacred site is not only architectural, but profoundly personal and universal.

The deeper we look,

the more the unseen begins  
to reveal itself.

# WORLD EXCLUSIVITY

*Beneath the Hagia Sophia*



# A UNIQUE UNDERGROUND WORLD NEVER FILMED BEFORE

For more than two decades, a dedicated exploration team has accessed places beneath the Hagia Sophia that have remained sealed, collapsed, forgotten or unreachable for centuries. Beginning in 1998, researchers, divers and cavers entered wells, cisterns, tunnels and subterranean chambers in a long-term investigation unlike anything ever conducted before. Their expeditions revealed architectural structures, artifacts and burial elements that had no precedent in published literature.

# EXCLUSIVE DISCOVERIES DOCUMENTED OVER 25 YEARS

Throughout these expeditions, the team uncovered and documented elements that were previously known only through legend or speculation:

- **The multi-chamber hypogeum**, debated in academic sources for decades, was located and filmed.
- **Subterranean rooms and corridors** that had collapsed or were believed inaccessible were entered and mapped.
- **Wells and cisterns**, explored through diving missions, revealed unexpected findings.
- **A previously undocumented skeleton**, buried in a hidden chamber beneath the Hagia Sophia, was discovered — with no existing historical reference to its presence.

These findings are not only archaeologically extraordinary — they are **exclusive**. No other documentary team in the world has ever captured this material.





# TRUE ACCESS. TRUE FOOTAGE. NO RECONSTRUCTIONS.

While existing public videos and international documentaries explore the history, architecture or symbolic meaning of the Hagia Sophia, none of them have filmed the real underground system itself. Available media includes only short fragments, partial explorations, or surface-level analyses, but no full cinematic documentary showing the newly accessed subterranean world.

This project is the **first and only** production to present:

- real footage from sealed areas
- real exploration of multi-layered tunnels
- real descent into cisterns and shafts
- real scientific investigation of undocumented spaces

# A HIDDEN WORLD REVEALED FOR THE FIRST TIME

Thanks to decades of preparation, specialist training and repeated access to spaces that were inaccessible to the public — including during restoration years — this documentary captures a subterranean realm that no broadcaster, streamer or institution has ever shown in its entirety.

This is not a reinterpretation.

- Not a reconstruction.
- Not a re-telling.

It is the **world premiere** of a hidden universe beneath one of humanity's most iconic monuments.



Sometimes the past has a  
way of speaking to us...

if we're willing to listen.

# GLOBAL RELEVANCE

*Beneath the Hagia Sophia*

# A MONUMENT AT THE HEART OF WORLD CIVILIZATIONS

The Hagia Sophia stands at the crossroads of continents, religions and empires. For more than 1,500 years, it has served as a cathedral, a mosque, a museum and a global symbol of spiritual devotion.

It embodies the shared heritage of the Byzantine and Ottoman worlds, making it one of the most influential cultural landmarks on Earth.



# A CENTER OF FAITH FOR BILLIONS

Few places command equal reverence from both Christianity and Islam. The layers of its spiritual history — from the Great Church of Constantinople to an imperial mosque — give the Hagia Sophia profound emotional resonance across cultures. Its hidden underground structures are part of this same sacred continuum, now revealed for the first time.



# A SITE OF POLITICAL AND CULTURAL ATTENTION

The Hagia Sophia remains a focal point in global discussions about identity, heritage, preservation and power. Every transformation of the monument draws worldwide attention, reflecting its unique position within international cultural memory. Documenting its newly accessed subterranean world offers rare insight into a place where history and politics converge.





# A GLOBAL AUDIENCE AWAITS

With millions of visitors every year and worldwide recognition across continents, the Hagia Sophia holds universal appeal. The revelations uncovered beneath it speak directly to global audiences interested in archaeology, spirituality, architecture, engineering, mystery and the shared history of civilizations.

Every discovery opens  
the door ...

to a deeper question.

# TARGET AUDIENCE

*Beneath the Hagia Sophia*



# TARGET AUDIENCE

## GLOBAL DOCUMENTARY VIEWERS

Audiences who appreciate premium historical, archaeological and cultural documentaries – especially viewers of platforms such as Netflix, Disney+, Amazon, Arte and National Geographic.

## HISTORY & ARCHAEOLOGY ENTHUSIASTS

Viewers drawn to ancient engineering, lost structures, world heritage sites and newly uncovered historical evidence.

# FAITH, CULTURE & CIVILIZATION AUDIENCES

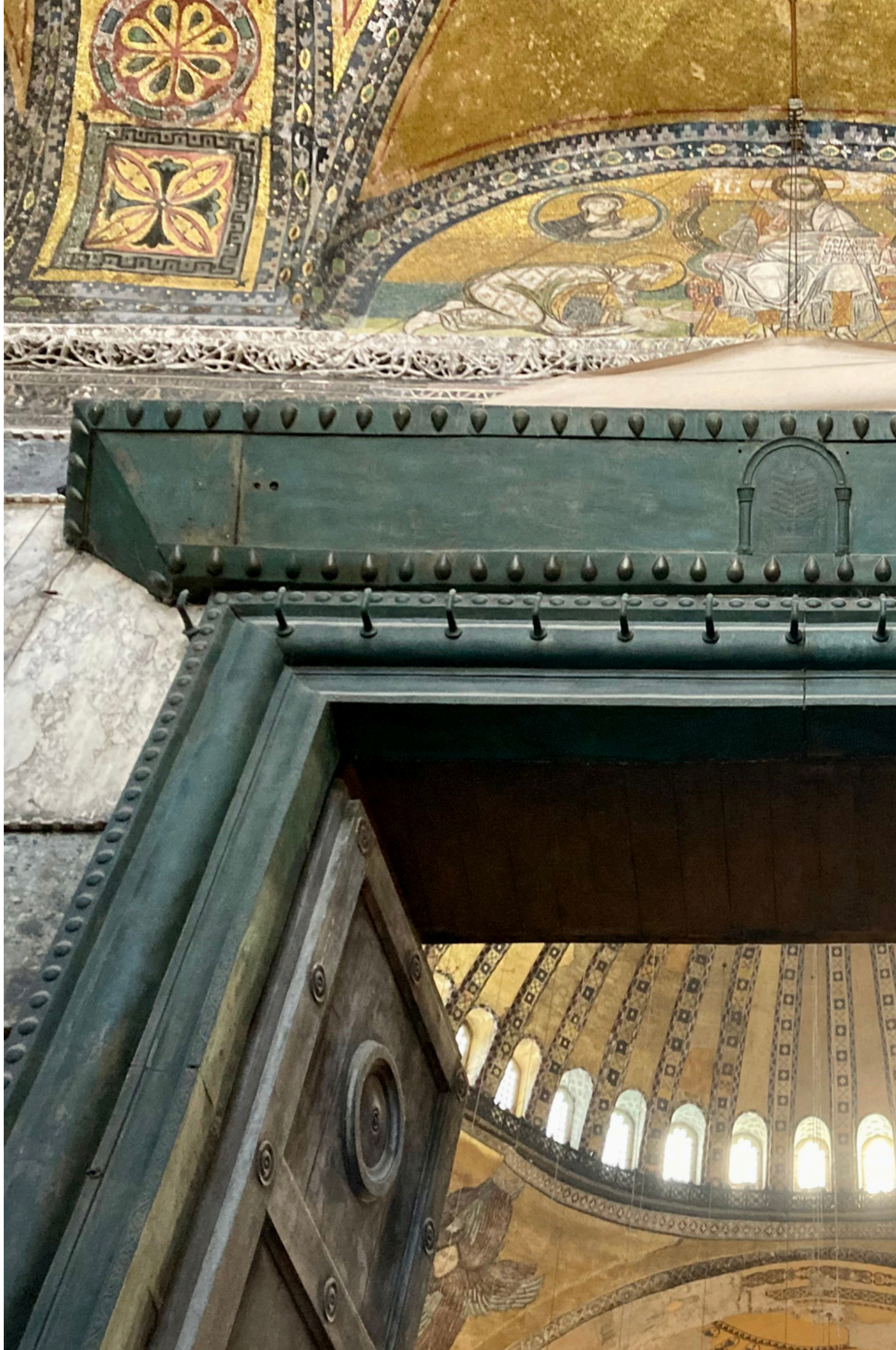
People interested in the intersection of Christianity, Islam, Byzantium, the Ottoman Empire and the shared spiritual history of civilizations.

## MYSTERY & EXPLORATION FANS

Those fascinated by hidden worlds, subterranean discoveries, sealed chambers, legends and long-standing unanswered questions.

**TARGET AUDIENCE**





# TARGET AUDIENCE

## ACADEMIC & INSTITUTIONAL VIEWERS

Universities, museums, cultural foundations and educational broadcasters who seek scientifically grounded content with exclusive archival value.

Silence is not empty.

It's full of answers.

# USPs

*Beneath the Hagia Sophia*

# UNIQUE SELLING POINTS

- **First full documentary revealing the real subterranean world of Hagia Sophia**  
No other film has ever shown the authentic tunnels, chambers, shafts and hidden structures that Göksel Gülensoy and his team have documented over decades..
- **Newly discovered 4th-century hypogeum**  
An archaeologically unique structure, older than the monument itself — filmed in its entirety for the first time.
- **Exclusive footage from sealed and inaccessible areas**  
Wells, cisterns, hidden rooms and a previously undocumented skeleton — none of which appear in any historical source, all captured during long-term exploration.

# UNIQUE SELLING POINTS

- **Premium cinematic visuals combined with scientific accuracy**  
Live-action footage complemented by archaeological visualizations, unified through a coherent cinematic and scientific approach.
- **A world-class artistic team**  
John Malkovich (Presenter), Jeremy Irons (Narrator), George Kallis (Music) — supported by Göksel Gülensoy, whose decades of exploration form the film's foundation.
- **Global cultural and spiritual relevance**  
Hagia Sophia is a universal symbol connecting cultures, religions and civilizations — recognized and revered worldwide.

Some places don't reveal  
their truths.

They wait for someone who  
dares to uncover them.

# PRODUCTION STATUS

*Beneath the Hagia Sophia*




# CURRENT STATUS

The documentary is currently in late post-production. Editing is complete, and the remaining work includes:

- Sound design
- Dolby THX
- Final grading
- VFX finishing
- Final quality control + subtitling

The original score by George Kallis is performed and recorded by the Budapest Symphony Orchestra.

The image shows the interior of Hagia Sophia, featuring a large central dome with intricate mosaics and a central medallion. The dome is supported by a series of ribs. Below the dome, there are smaller domes and arches. Two large circular medallions with Arabic calligraphy are visible on the left and right sides. The overall atmosphere is one of historical grandeur and religious significance.

The film is currently in late post-production, with sound design and final effects pending.

# EXPECTED DELIVERY

**August 2026**

The deeper we go, ...

the more the past begins to  
breathe again.

# VERSIONS & DELIVERY

*Beneath the Hagia Sophia*



# AVAILABLE VERSIONS

---

- **52–54 min Broadcast Version**

Designed for international broadcasters such as Arte, PBS or BBC, following standard public television formatting.

- **70–90 min Feature  
Documentary Version**

Ideal for festivals, cinemas, streamers and cultural institutions looking for premium long-form content.

# TECHNICAL DELIVERY

---

- **Format**

4K UHD ProRes Master

- **Audio**

Dolby Digital

- **Suptitles**

English (Closed Captions)

- **Materials Included**

Trailer (60–90 sec)

Teaser (30 sec)

Key art & stills

Metadata & transcripts

M&E track



Every stone remembers.

Not every stone is willing  
to speak.

# DIRECTOR'S STATEMENT

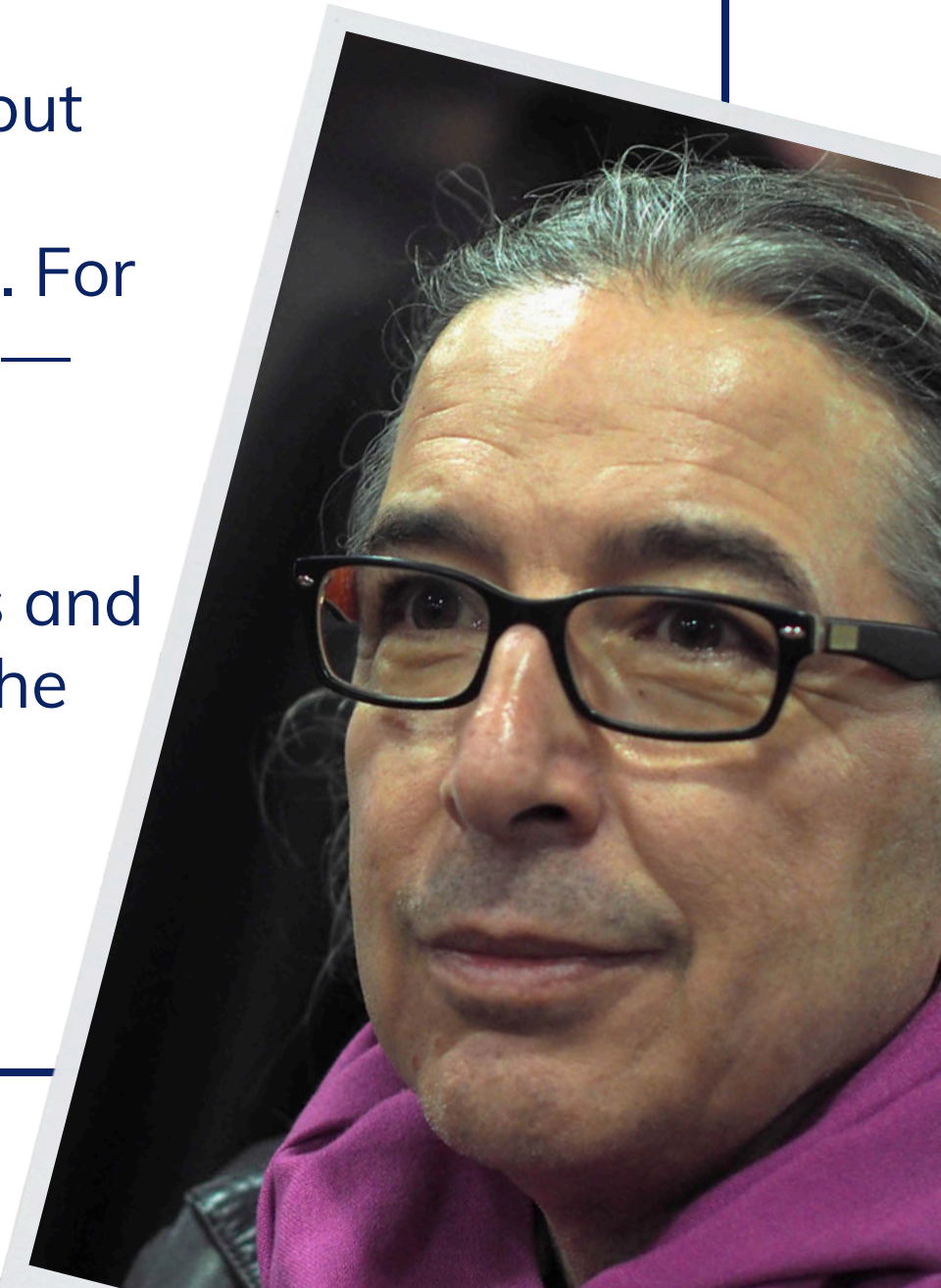
*Beneath the Hagia Sophia*

For more than two decades, I have dedicated my life to exploring the hidden world beneath the Hagia Sophia. What began in 1998 as a series of dives and explorations into forgotten wells and collapsed corridors soon became a lifelong mission to document a realm that had vanished from memory. Over the years, my team and I uncovered structures debated for centuries — from the multi-chamber hypogeum to sealed rooms, submerged passages and a burial that appears in no historical record.

These discoveries revealed not only the engineering genius of past civilizations, but the spiritual depth and universal significance of the Hagia Sophia itself. This documentary is the culmination of decades of preparation, patience and passion. For the first time, audiences will be able to see the subterranean world as we saw it — real, untouched, and breathtaking in its mystery.

My hope is that this film will preserve these hidden spaces for future generations and inspire a deeper appreciation for the extraordinary monument that has shaped the hearts and histories of people across the world.

— **Göksel Gülensoy, Director**



What lies beneath is  
never lost —

only hidden from those  
who stop searching.

# INSIDE THE HIDDEN WORLD

These images were captured during real exploration work beneath the Hagia Sophia — documenting tunnels, chambers and submerged structures that remained inaccessible for centuries.



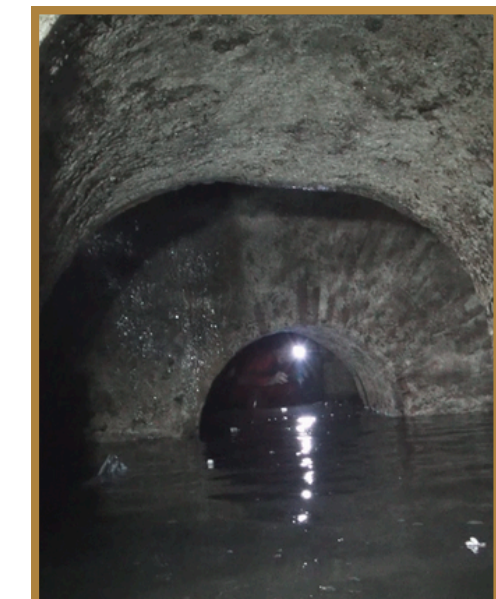
BENEATH



HAGIA



SOPHIA



The image shows the interior of Hagia Sophia, featuring a large, ornate golden dome with intricate mosaics and frescoes. A prominent circular medallion with Arabic calligraphy is visible on the left. The architecture includes a balcony with a decorative railing and several chandeliers hanging from the ceiling. The overall atmosphere is one of historical grandeur and religious significance.

# LISTEN CLOSELY

**Join us in bringing this unprecedented  
discovery documentary to the screen.**

# INTERNATIONAL REPRESENTATION FOR **GÖKSEL GÜLENSOY**

---

**Sophie Kamuran Demirtas**  
Executive Producer  
Ameera Consulting Company

☎ +41 76 575 55 75

✉ info@ameera.com.tr

